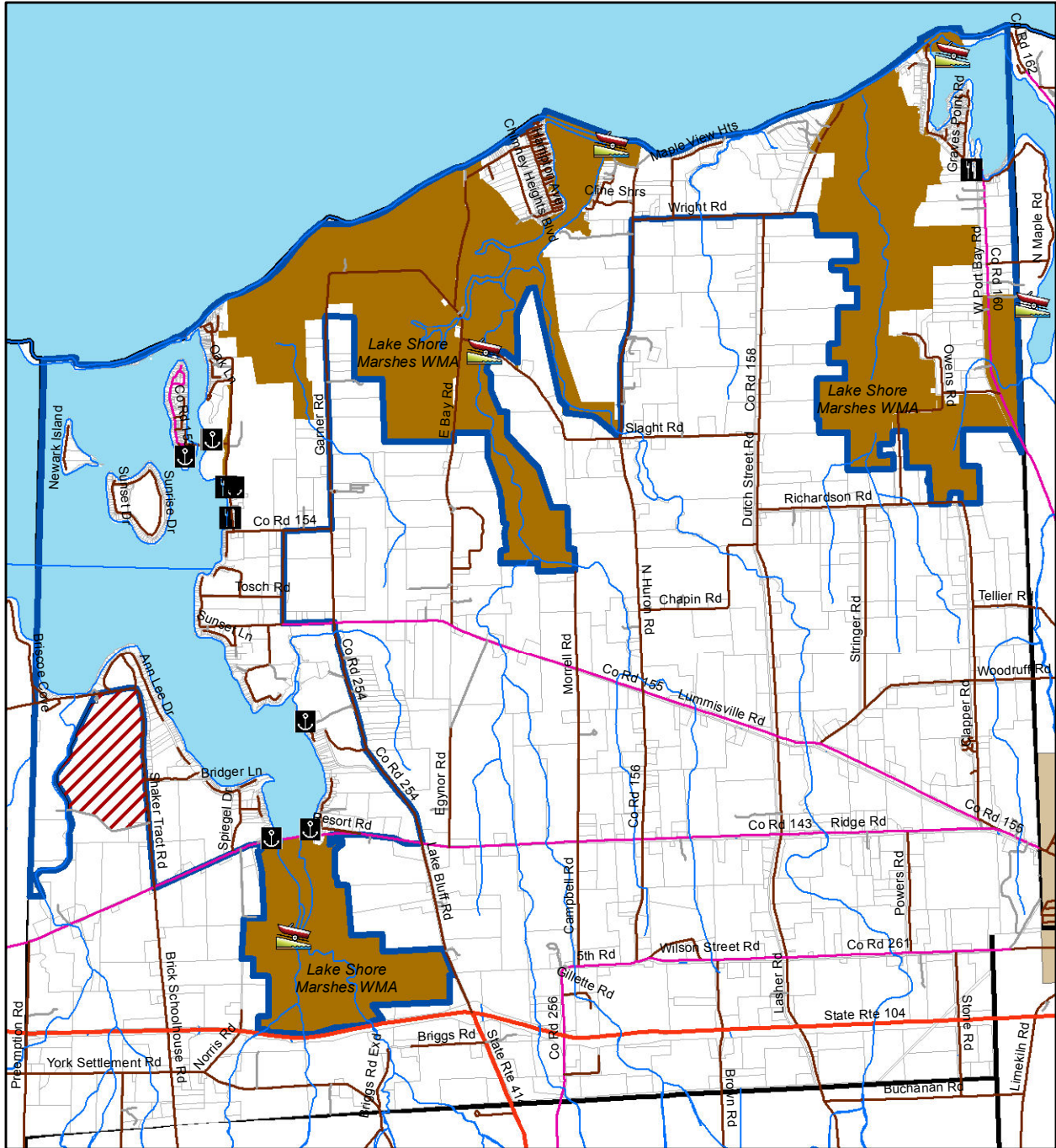











Water-Dependent & Water-Enhanced Uses



SOURCE: 2011 Real Property Tax data provided by the Wayne County Planning Department; Stuart I. Brown Associates

 BoatLaunch	 Streams	
 Restaurant	 Coastal Area Boundary	
 Marina	 Proposed Addition to Waterfront Area	<p>DRAFT: August 2012</p> <p>0 0.5 1 2 Miles</p> 
	 State-owned Land	